

# BW-6182-BTM

## Wireless Mobil Under-Bed Scale

Designed for bedridden patients, this system allows quick, accurate in-room weighing. Its fully wireless setup ensures high mobility and easy use without moving the patient · improving clinical efficiency and reducing risks.

### Features

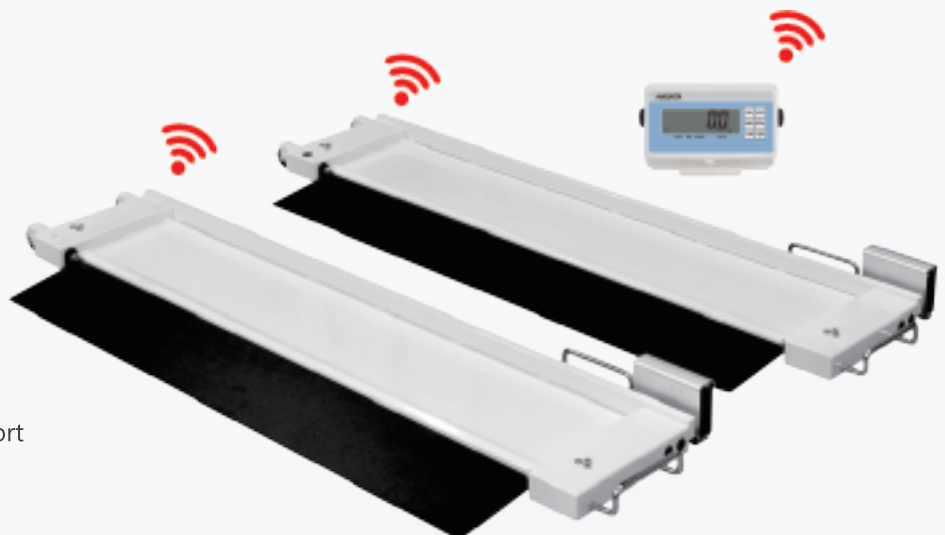
- Designed for bedridden patients; allows in-room measurement without moving the patient
- Ultra-low weighing beams (2.5 cm) with low-angle ramps for safe, easy bed access
- Fully wireless to weighing beams for fast, convenient, and safe operation
- Durable coated weighing beams or optional #304 stainless steel (BW-6182ST-BTM)
- Equipped with handles and wheels; foldable ramps for easy transport
- Auto power-off and low battery indicator
- Measurement data can be transmitted via Bluetooth (standard feature)

### Functions

- Equipped with filtering function for quick weight lock-in
- Tare function deducts bed, blanket to show actual patient weight
- Reweigh function without stepping off the scale ensures data accuracy
- Recall of previous measurement for prioritized care and delayed recording
- Optional Meas510 app for smartphones/tablets enables real-time second display and supports ID and pre-tare barcode scanning



- With handles and wheels ; foldable ramps for easy transport



## Specifications

Model : BW-6182-BTM

Capacity : 360kg (optional 500 kg available)

Graduation : 100g

Beam Size : 1000 x 160mm (WxD) \*flat portion

Beam Dimension : 1245 x 390x 90 mm (WxDxH)

Power Supply : DC 12V adaptor ×2, rechargeable AA NiMH battery packs ×3 sets  
(for indicator and beams; batteries not included)

Digital Display : Black LCD with 25.4 mm digits and backlight

Net Weight : 13.2 kg (each beam)

Transmission Distance : Low-power Bluetooth, effective range 10m (standard)

Optional : • USB interface

- Display column mount
- Bluetooth thermal printer
- Meas 510 App (Android) —Mobile app (Bluetooth required);  
secondary display with ID & pre-tare barcode functions

## Optional

### ■ Meas 510 App (Android)



Mobile app (Bluetooth required);  
secondary display with ID &  
pre-tare barcode functions